



HEMMINGS HOMES

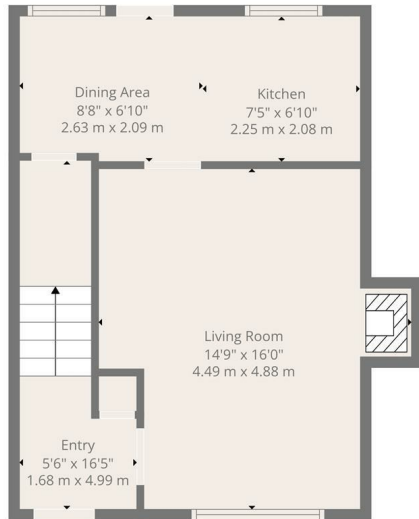
OFFERS OVER

**£105,000**

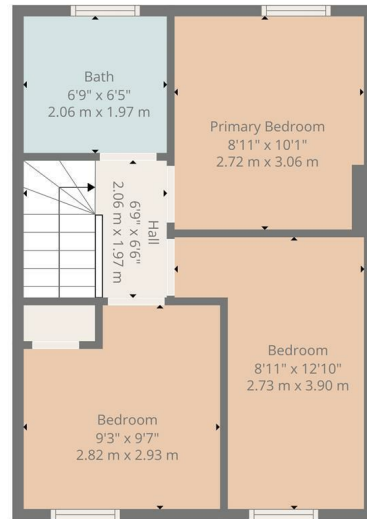
**Northfield Street**

Motherwell, ML1 1HE





Ground Floor

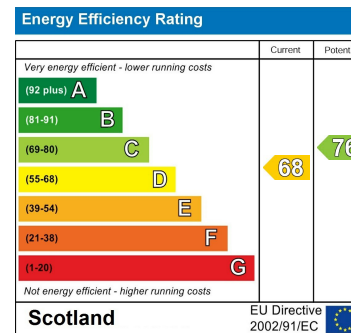
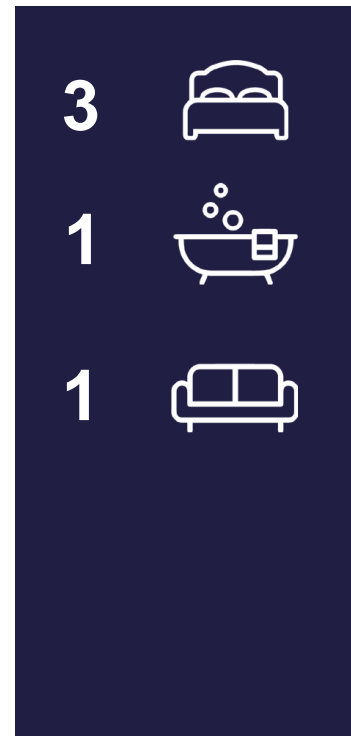


1st Floor



**TOTAL: 752 sq. ft, 70 m<sup>2</sup>**  
 Ground floor: 380 sq. ft, 35 m<sup>2</sup>, 1st floor: 372 sq. ft, 35 m<sup>2</sup>  
 EXCLUDED AREAS: WALLS: 83 sq. ft, 7 m<sup>2</sup>

Floor Plan Created By Cubicasa App. Measurements Deemed Highly Reliable But Not Guaranteed.



Agents Note: Whilst every care has been taken to prepare these particulars, they are for guidance purposes only. All measurements are approximate and are for general guidance purposes only and whilst every care has been taken to ensure their accuracy, they should not be relied upon and potential buyers/tenants are advised to recheck the measurements



HEMMINGS HOMES

### OFFICE ADDRESS

376 Brandon Street  
 Motherwell  
 North Lanarkshire  
 ML1 1XA

### OFFICE DETAILS

01698 263413  
[enquiries@hemmingshomes.co.uk](mailto:enquiries@hemmingshomes.co.uk)  
[hemmingshomes.co.uk](http://hemmingshomes.co.uk)